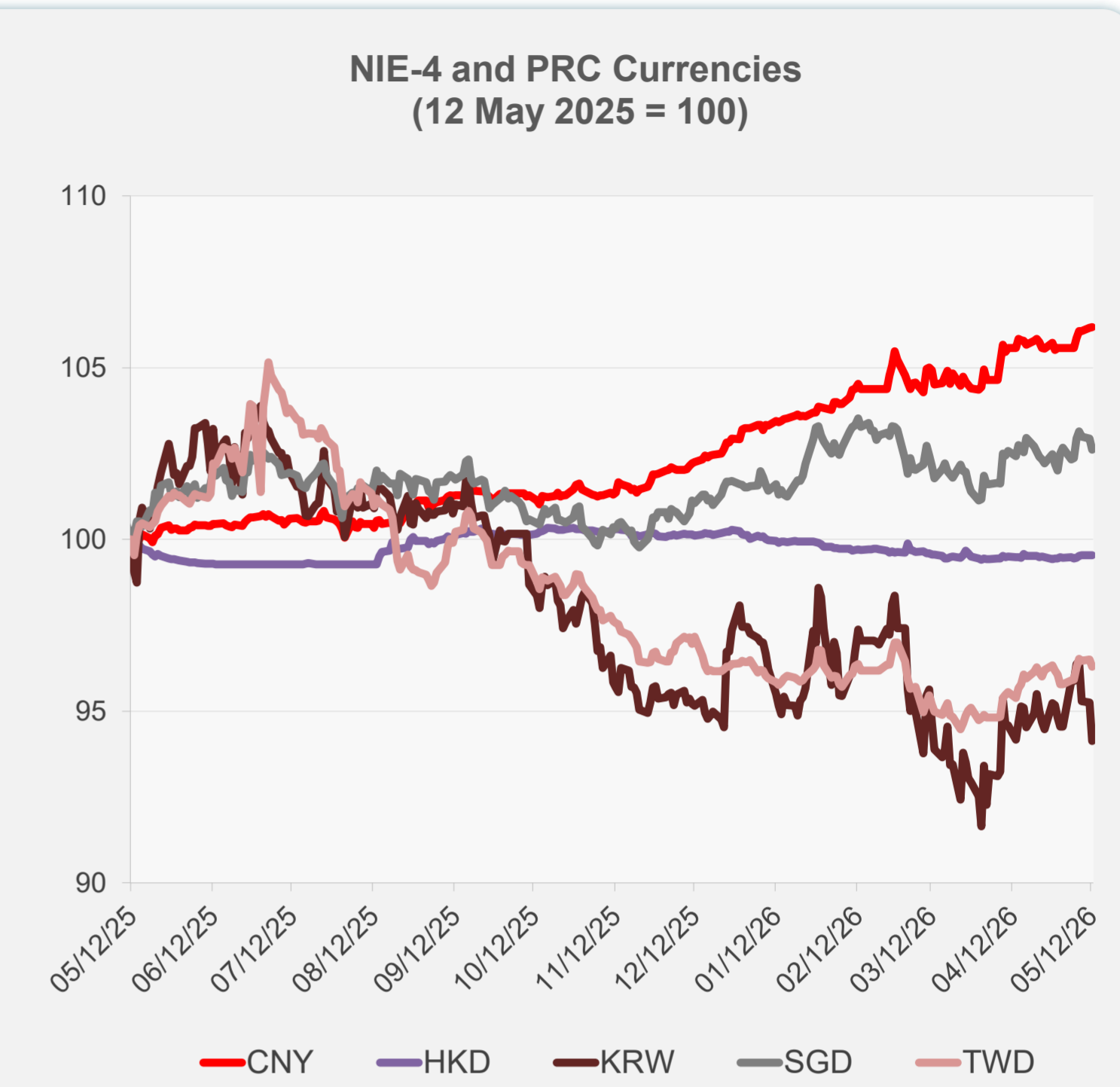
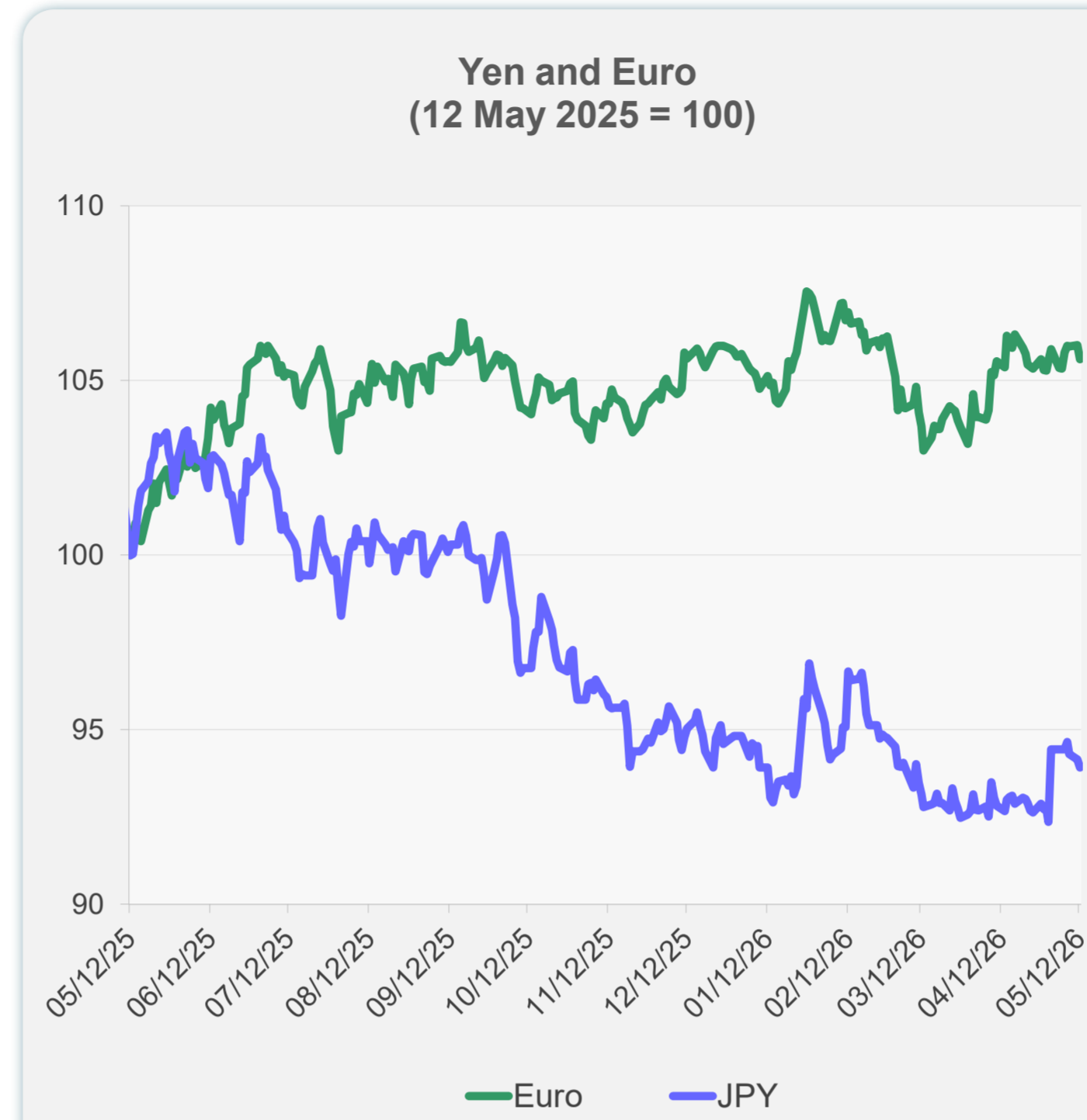
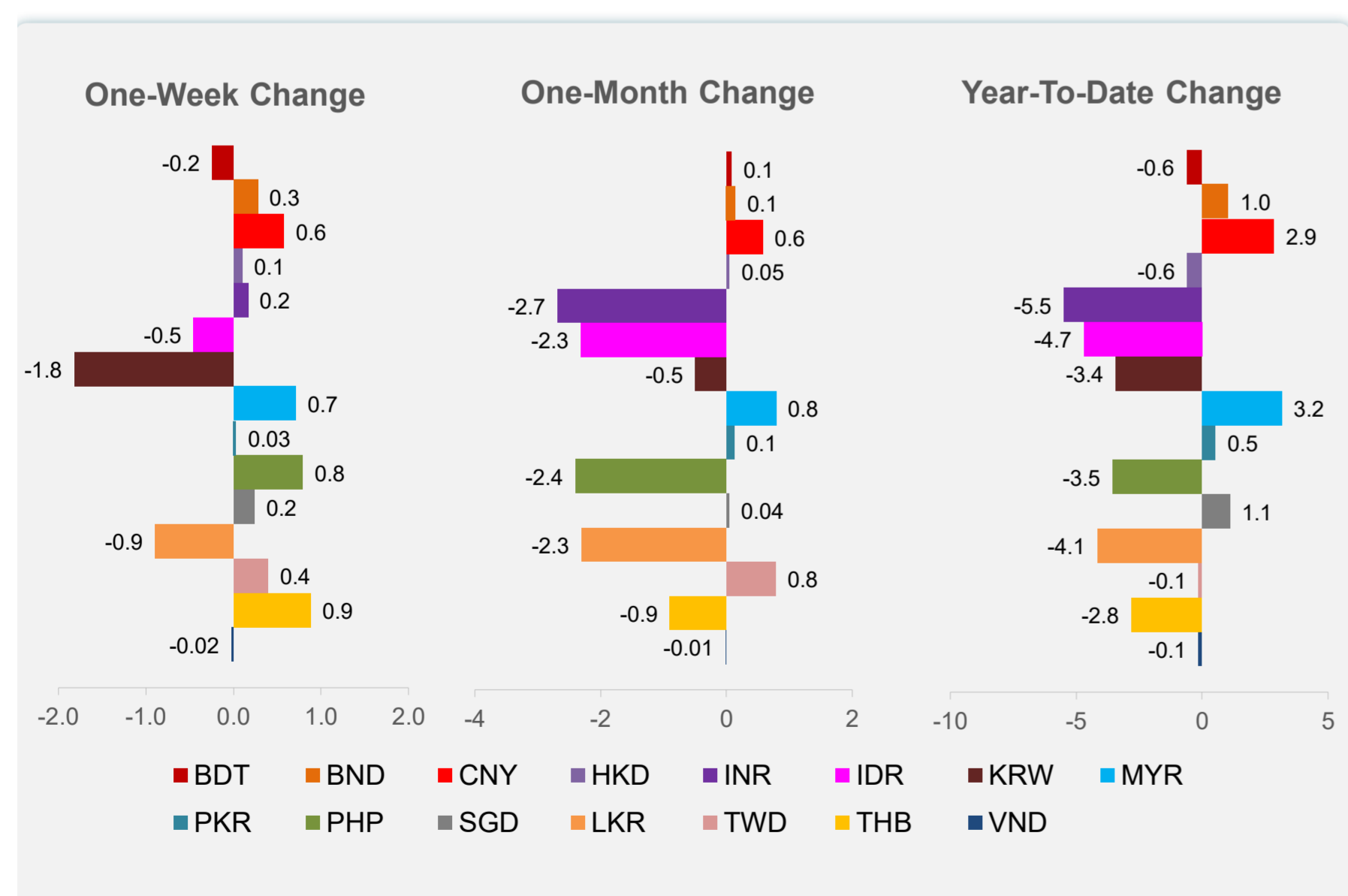
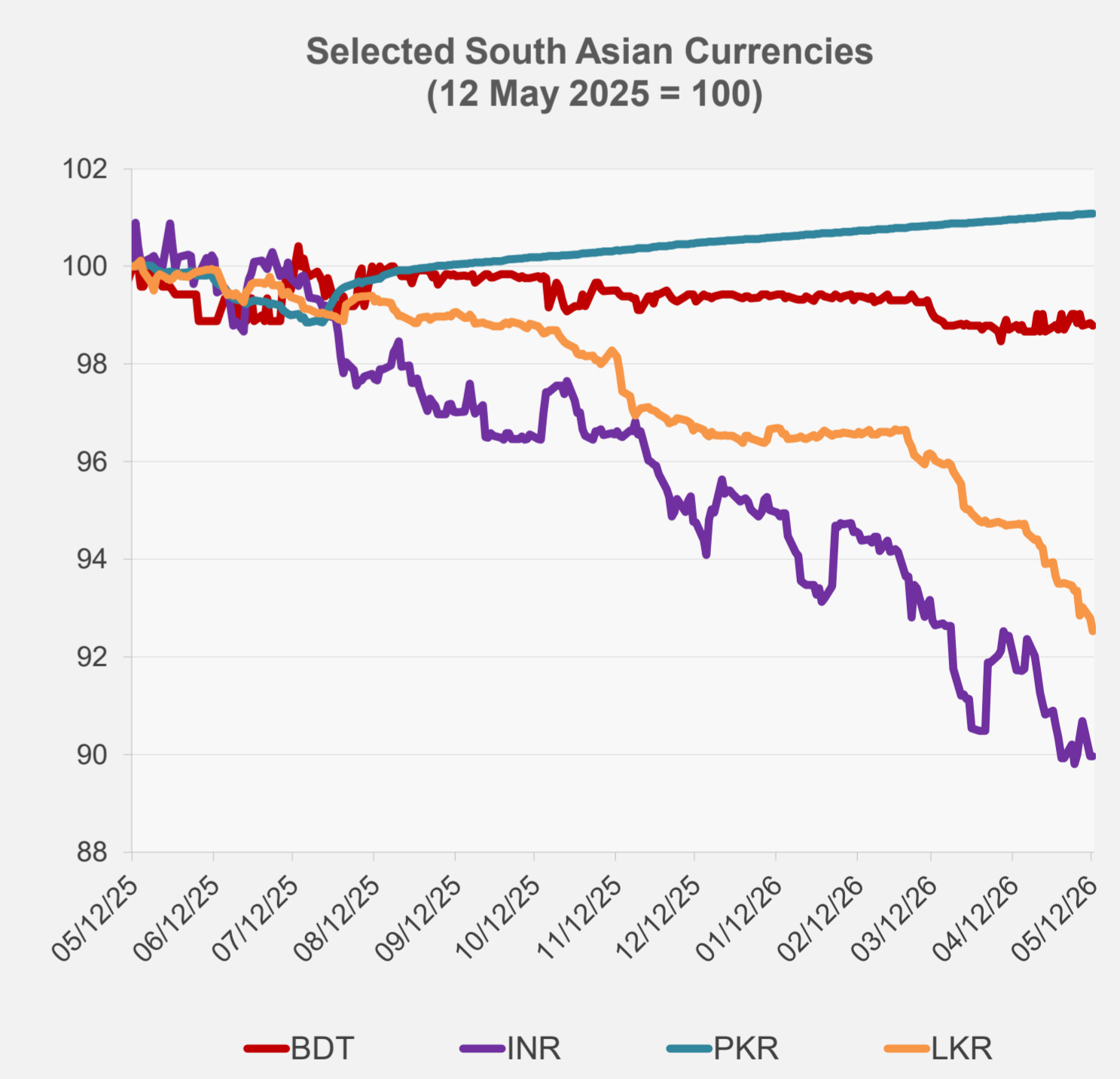
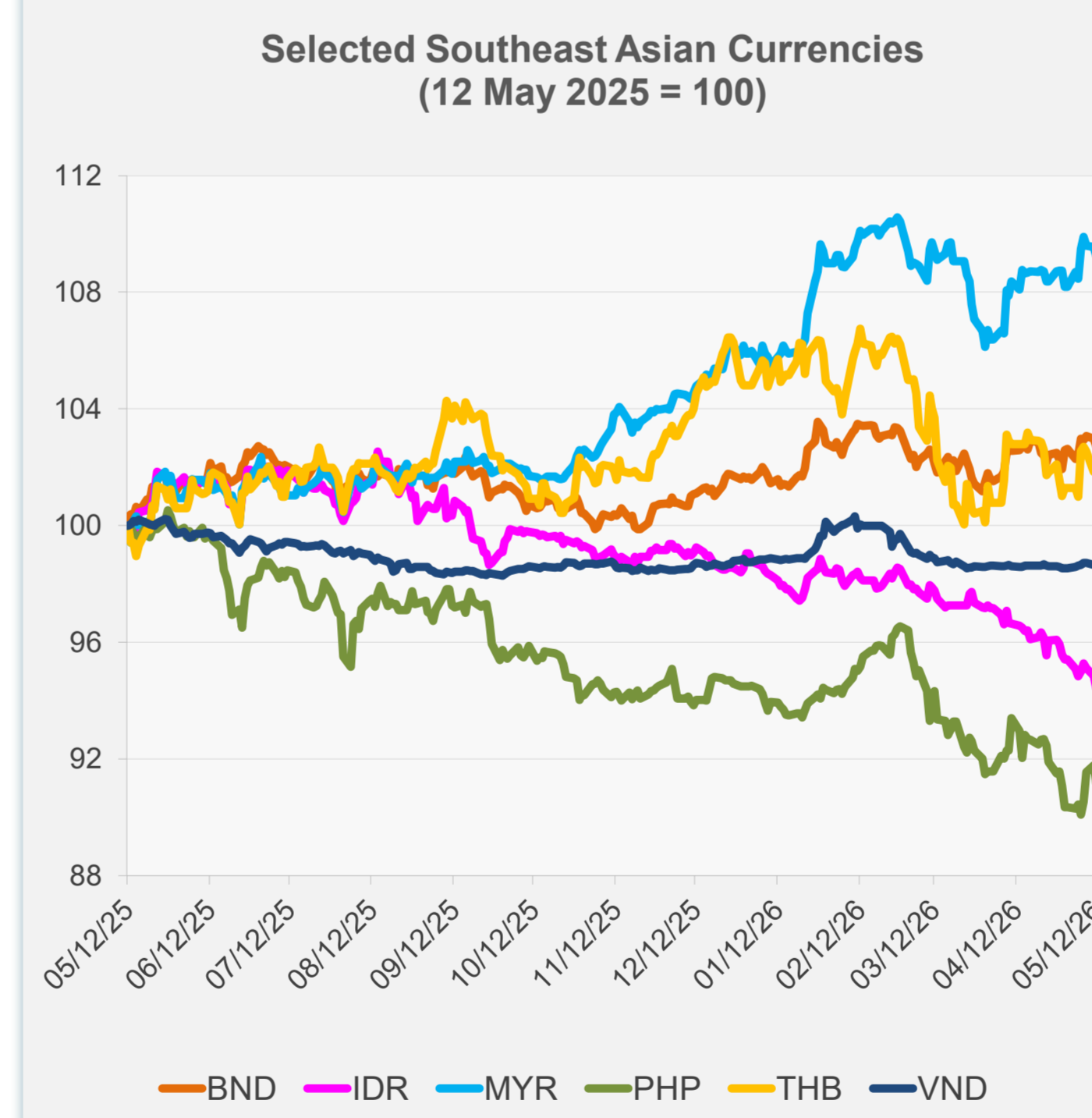


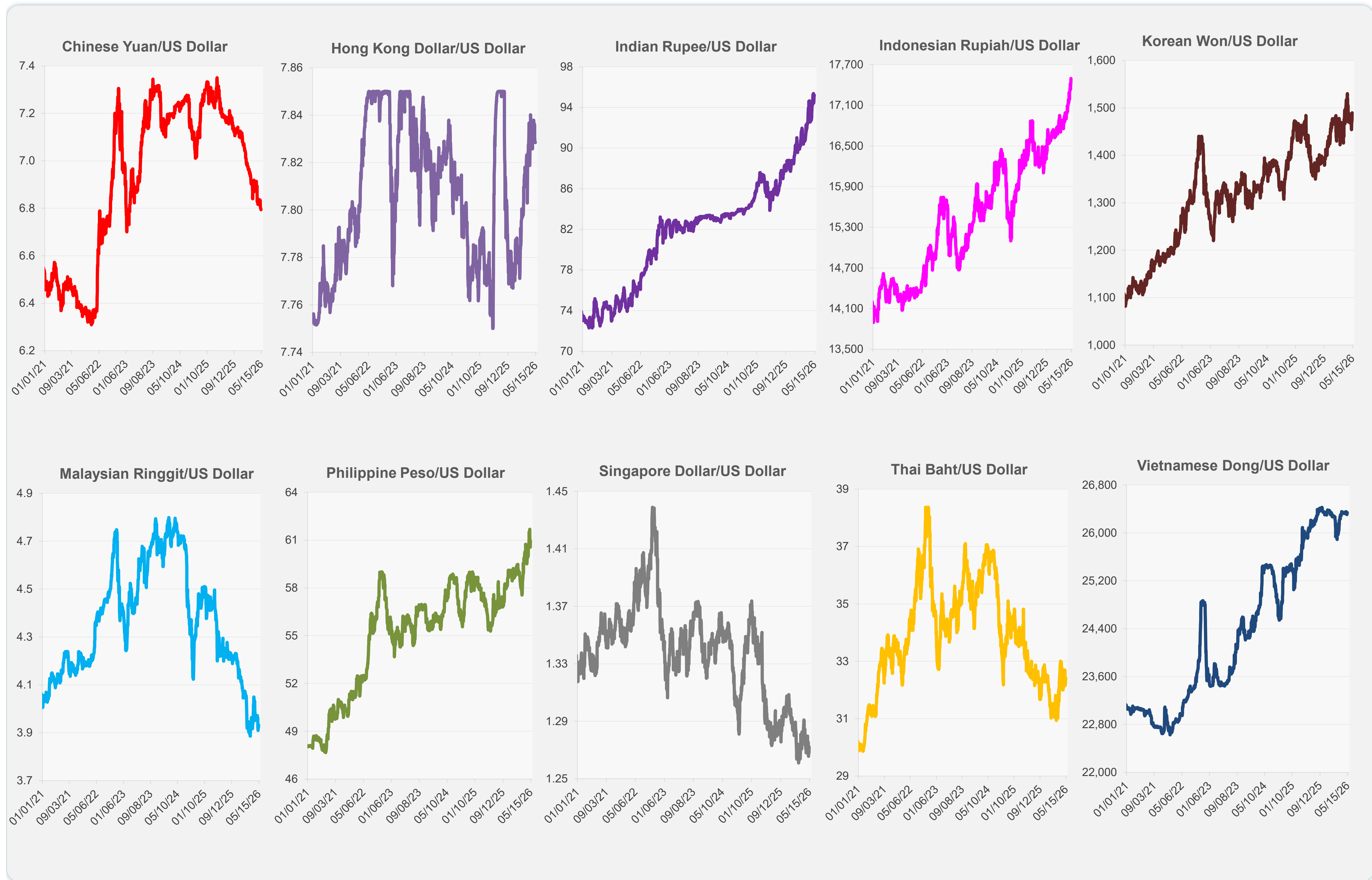
	Latest Closing	% change from Previous Day	% change from 01-Jan-26
Euro	0.85	-0.38	-0.08
Japanese yen (JPY)	157.51	-0.25	-0.97
Bangladeshi taka (BDT)	123.00	-0.06	-0.61
Brunei dollar (BND)	1.27	-0.28	1.03
Chinese yuan (CNY)	6.79	0.01	2.85
Hong Kong dollar (HKD)	7.83	0.00	-0.57
Indian rupee (INR)	95.20	0.00	-5.49
Indonesian rupiah (IDR)	17,494.50	-0.48	-4.68
Korean won (KRW)	1,489.90	-1.17	-3.42
Malaysian ringgit (MYR)	3.93	-0.29	3.15
Pakistan rupee (PKR)	278.65	0.00	0.52
Philippine peso (PHP)	60.97	-0.70	-3.55
Singapore dollar (SGD)	1.27	-0.31	1.08
Sri Lanka rupee (LKR)	323.00	-0.29	-4.15
Taipei,China NT dollar (TWD)	31.48	-0.21	-0.13
Thai baht (THB)	32.41	0.03	-2.80
Vietnamese dong (VND)	26,338.50	-0.05	-0.15



NIE = Newly Industrialized Economies



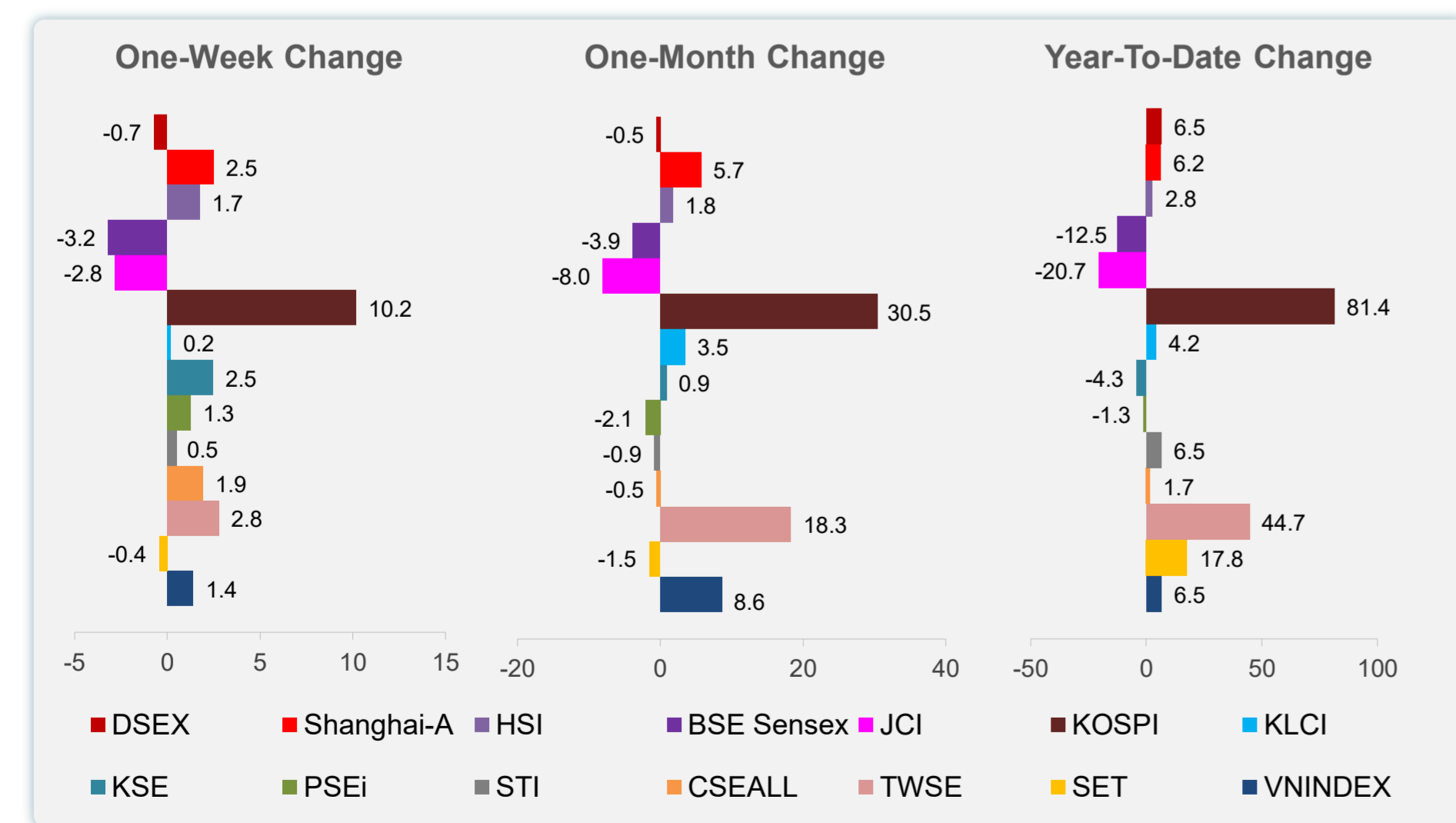
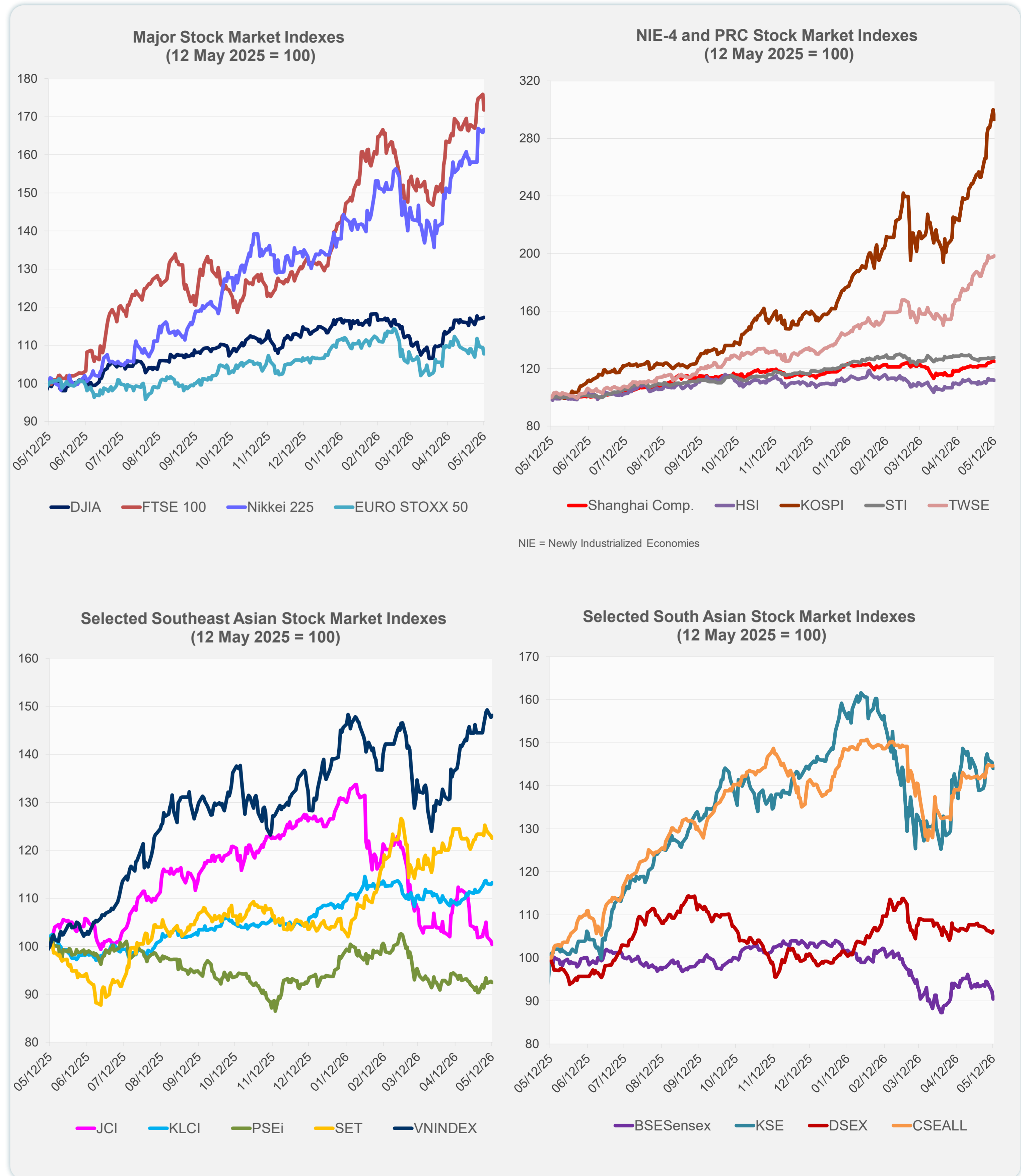
Note: Negative/Decreasing values indicate depreciation of local currency, and positive/increasing values indicate appreciation.
Source: ADB calculations using data from Bloomberg and Haver Analytics.



Source: Haver Analytics.

Daily Market Watch
STOCK INDEXES

	Latest Closing	% change from Previous Day	% change from 01-Jan-26
US Dow Jones Ind Avg	49,760.56	0.11	3.53
US NASDAQ	26,088.20	-0.71	12.25
US S&P 500	7,400.96	-0.16	8.11
UK FTSE 100	14,779.93	-2.34	31.24
EURO STOXX 50	5,808.45	-1.48	0.29
Japan NIKKEI 225	62,742.57	0.52	24.64
Bangladesh DSEX	5,229.96	0.47	6.50
PRC Shanghai Comp.	4,214.49	-0.25	6.19
Hong Kong, China HSI	26,347.91	-0.22	2.80
India BSE Sensex	74,559.24	-1.92	-12.48
Indonesia JCI	6,858.90	-0.68	-20.68
Korea, Rep. of KOSPI	7,643.15	-2.29	81.37
Malaysia KLCI	1,750.56	0.30	4.19
Pakistan KSE 100	168,905.10	-1.01	-4.29
Philippines PSEi	5,971.98	-0.25	-1.34
Singapore STI	4,946.00	0.07	6.45
Sri Lanka CSEALL	23,015.32	0.02	1.73
Taipei, China TWSE	41,898.32	0.26	44.66
Thailand SET	1,483.56	-0.38	17.77
Viet Nam VNINDEX	1,901.10	0.30	6.53



Sources: ADB calculations using data from Bloomberg and CEIC Data Company.

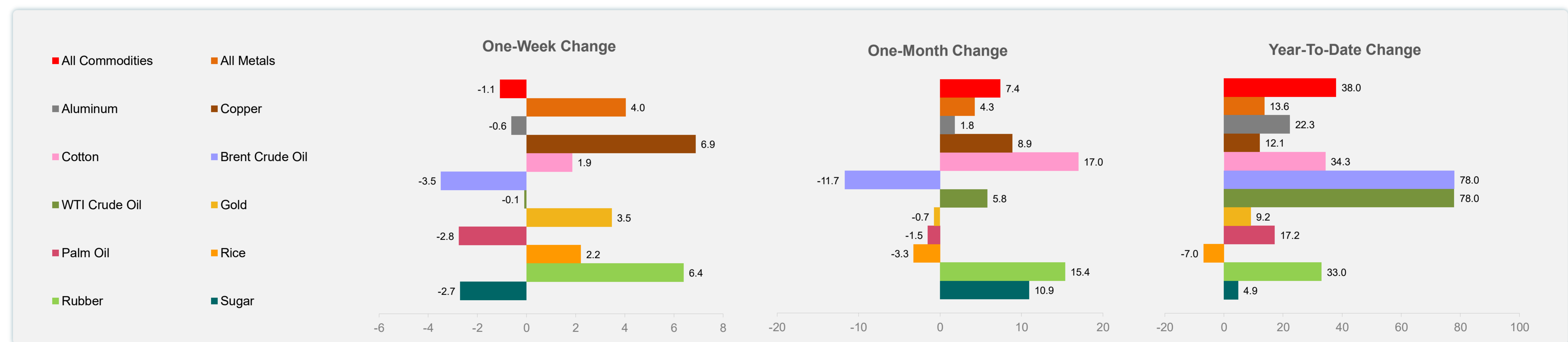
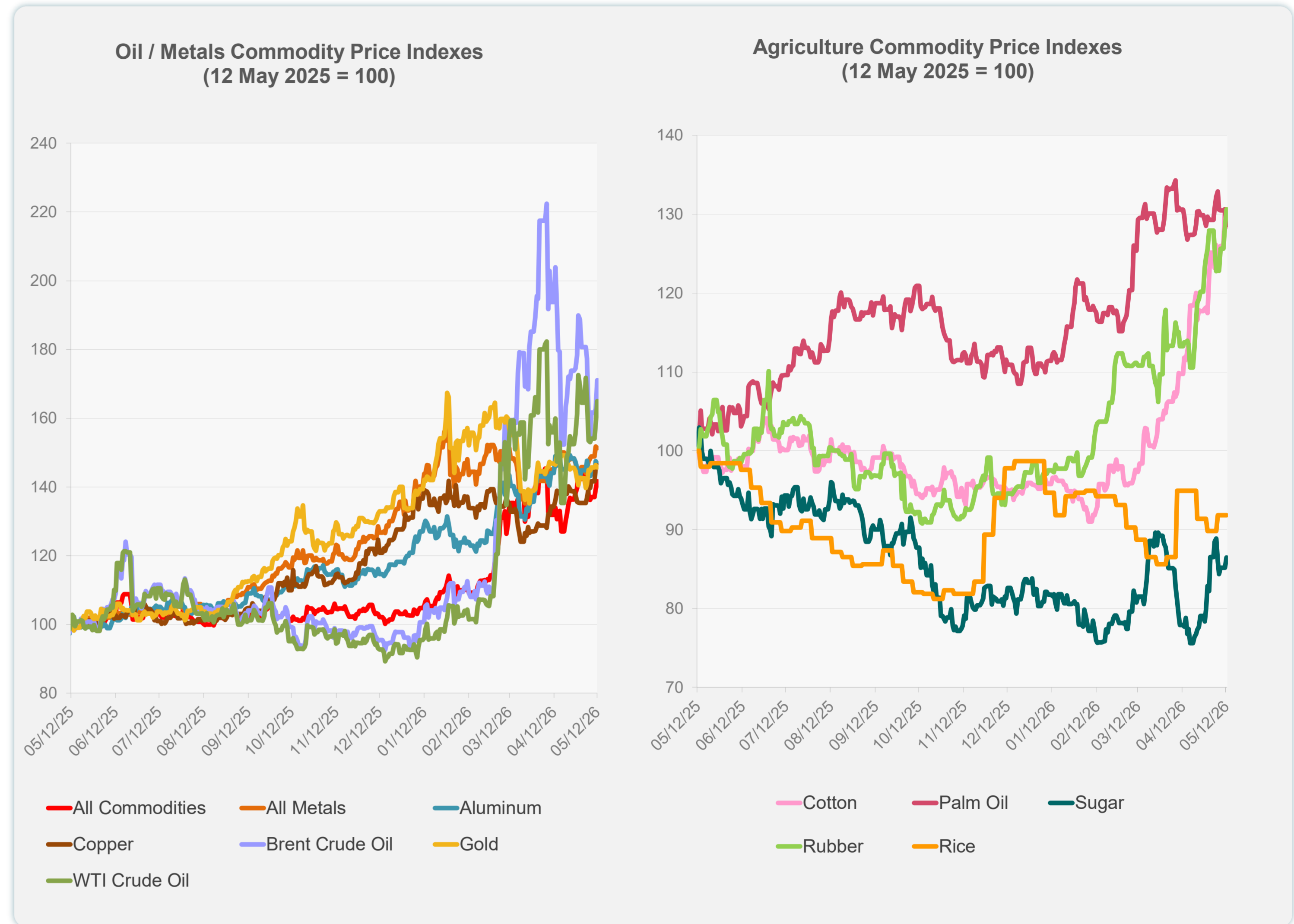


Sources: ADB calculations using data from Bloomberg and CEIC Data Company.

Daily Market Watch
COMMODITY PRICES

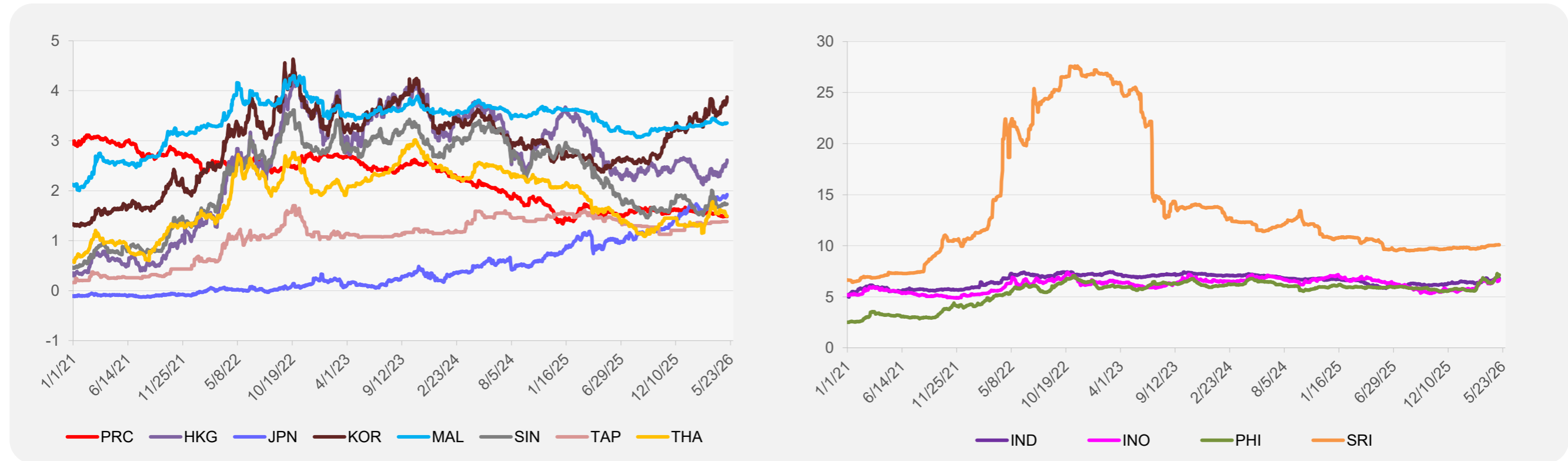
	Unit	Latest Closing	% change from Previous Day	% change from 01-Jan-26
S&P All Commodities	US\$	756.90	1.67	37.99
S&P All Metals	US\$	504.33	-0.33	13.65
Aluminum	US\$/metric ton	3,629.74	-0.57	22.30
Copper	US\$/metric ton	13,958.90	0.47	12.09
Cotton	US cents/lb	83.32	-1.71	34.34
Brent Crude Oil	US\$/barrel	111.13	5.22	77.96
WTI Crude Oil	US\$/barrel	102.18	4.19	77.95
Gold	US\$/troy oz	4,715.13	-0.44	9.16
Palm Oil	US\$/metric tonne	1,135.07	-1.53	17.18
Rice ¹	US\$/metric ton	415.00	0.00	-6.95
Rubber ²	US\$/kg	286.00	1.78	33.02
Sugar	US cents/lb	15.51	1.51	4.87

¹ Latest closing price from 6 May 2026.
² Singapore Exchange, Ribbed Smoked Sheet Rubber.

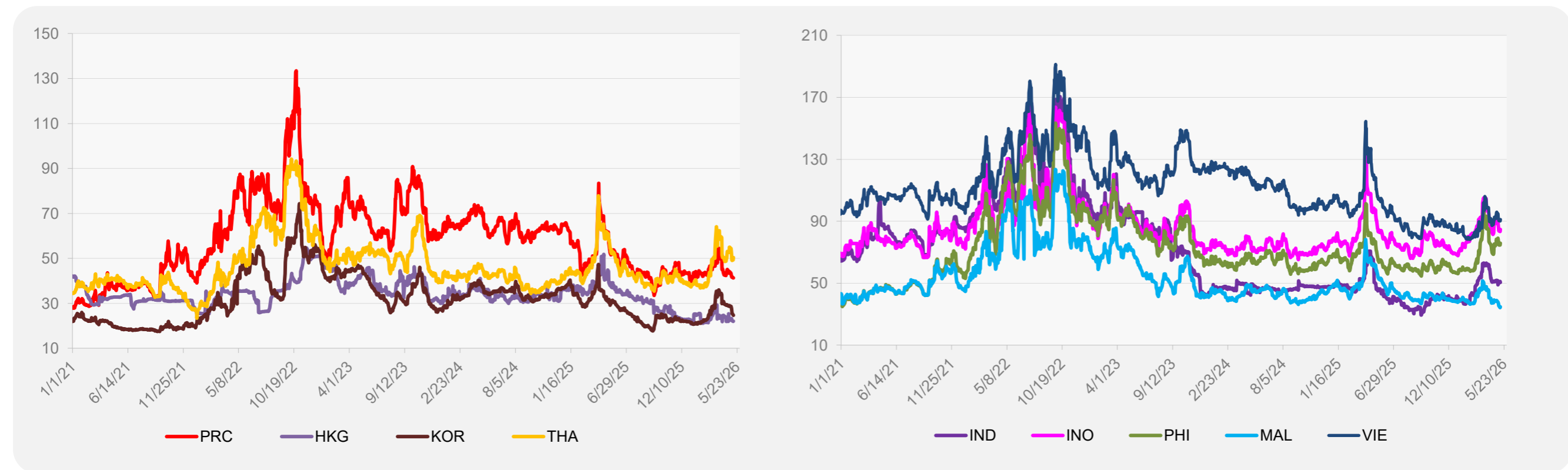


Source: ADB calculations using data from Bloomberg.

5-YEAR LOCAL CURRENCY GOVERNMENT BOND YIELDS (%)



5-YEAR CREDIT DEFAULT SWAP¹



¹ In USD and based on sovereign bonds.
Source: ADB calculations using data from Bloomberg.